

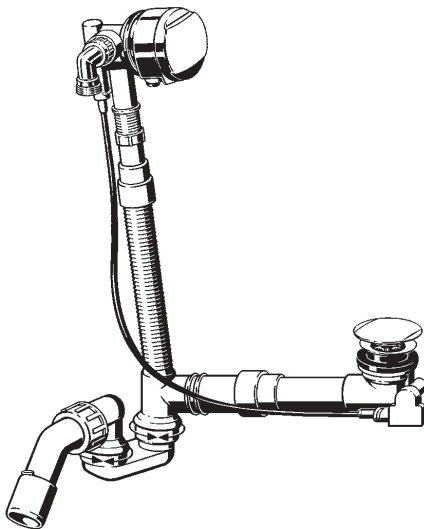
**Poresta Fix Trio Wannenträger-Spezialgarnitur**  
mit integriertem Wassereinlauf

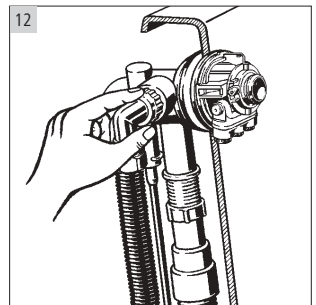
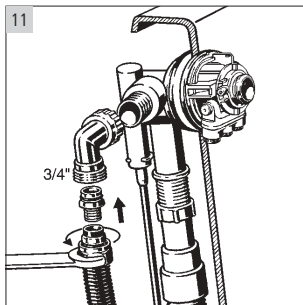
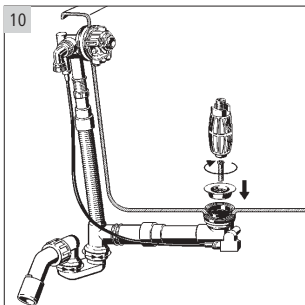
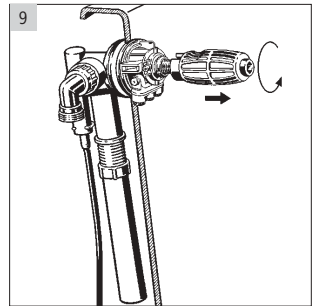
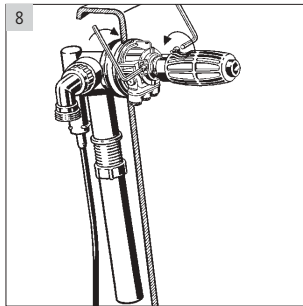
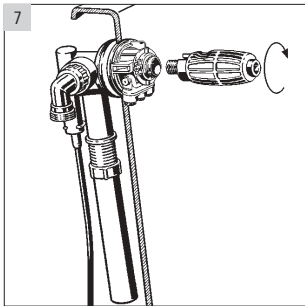
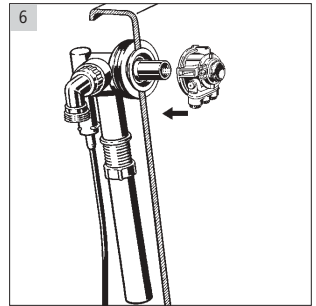
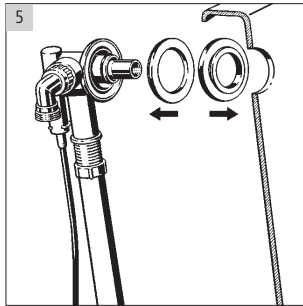
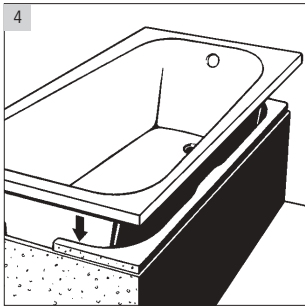
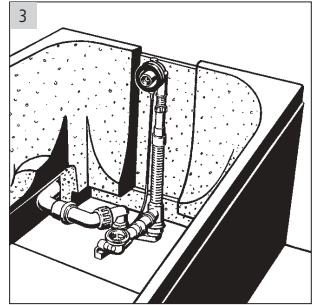
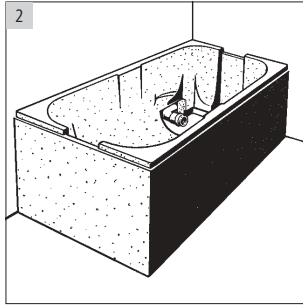
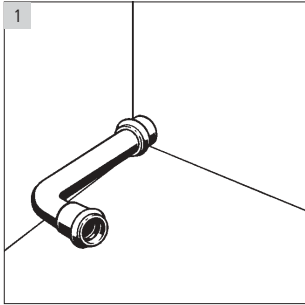
**Poresta Fix Trio waste kits for bath tub supports**  
with integrated water inlet

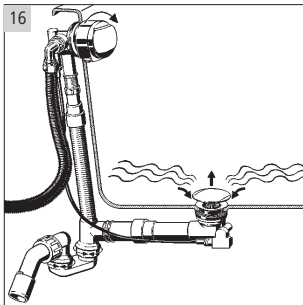
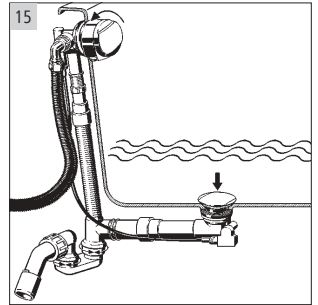
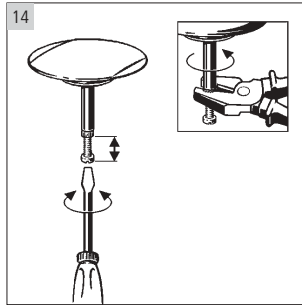
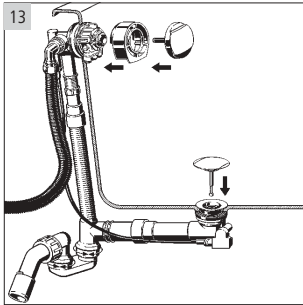
**Garniture spéciale support de baignoire Poresta Fix Trio**  
avec système d'évacuation d'eau intégré

**Poresta Fix Trio speciaal garnituur voor badraders**  
met geïntegreerde wateraanvoer

**Gruppo miscelatore speciale Poresta Fix Trio  
per supporto vasca**  
con erogazione integrata





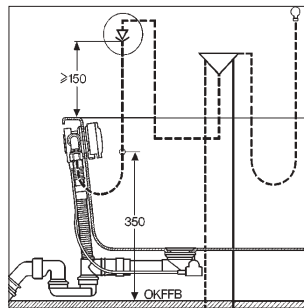


### Sicherung des Trinkwassers vor Verunreinigung

Die Qualität des Trinkwassers darf nicht durch Zurückfließen von Nicht-trinkwasser (Badewasser) in das Trinkwassersystem beeinträchtigt werden. Um dies sicherzustellen ist ein Rohrunterbrecher zwischen UP-Absperriarmatur und Badewannenablauf zu installieren. Es sind die gültigen Normen und Vorschriften einzuhalten.

### Protection of drinking water from pollution

The quality of drinking water must not be affected by the backflow of non-drinking water (bath water) into the drinking water system. In order to ensure this, a pipe interruptor is to be installed between the flush-mounted shut-off fittings and the bath tub drain. The valid standards and regulations are to be observed.



### Préservation de l'eau potable contre les impuretés

Le reflux de l'eau non potable (eau de baignade) ne doit en aucun cas nuire à la qualité de l'eau potable. L'installation d'un disconnecteur hydraulique entre la vanne d'arrêt encastrée et le système d'évacuation de la baignoire en garantissant la qualité. Votre installation devra respecter les normes et directives en vigueur.

### Bescherming van het drinkwater tegen verontreiniging

De kwaliteit van het drinkwater mag niet door het terugstromen van niet-drinkwater (badwater) in het drinkwatersysteem worden beïnvloed. Om dit te garanderen dient men een buisonderbreker te installeren tussen de afsluitende inbouwarmatuur en de badkuipafvoer. Men dient zich hierbij aan de normen en voorschriften te houden.

### Protezione contro la contaminazione dell'acqua potabile

La qualità dell'acqua potabile non deve essere compromessa dal riflusso dell'acqua non potabile (utilizzata per il bagno) nel sistema di acqua potabile. Per garantire la protezione dell'acqua potabile è necessario installare una valvola antiriflusso tra la valvola di chiusura a incasso e lo scarico della vasca. Per l'installazione è necessario osservare le norme e le disposizioni vigenti.



illbruck Sanitärtechnik GmbH  
Illbruckstraße 1  
34537 Bad Wildungen  
Deutschland

Telefon: +49 (0)5621-801-0  
Fax: +49 (0)5621-801-278

[info@illbruck-sanitaertechnik.com](mailto:info@illbruck-sanitaertechnik.com)  
[www.illbruck-sanitaertechnik.com](http://www.illbruck-sanitaertechnik.com)